

AMENDED VERSION
CERTIFIED LAND CORNER RECORDATION

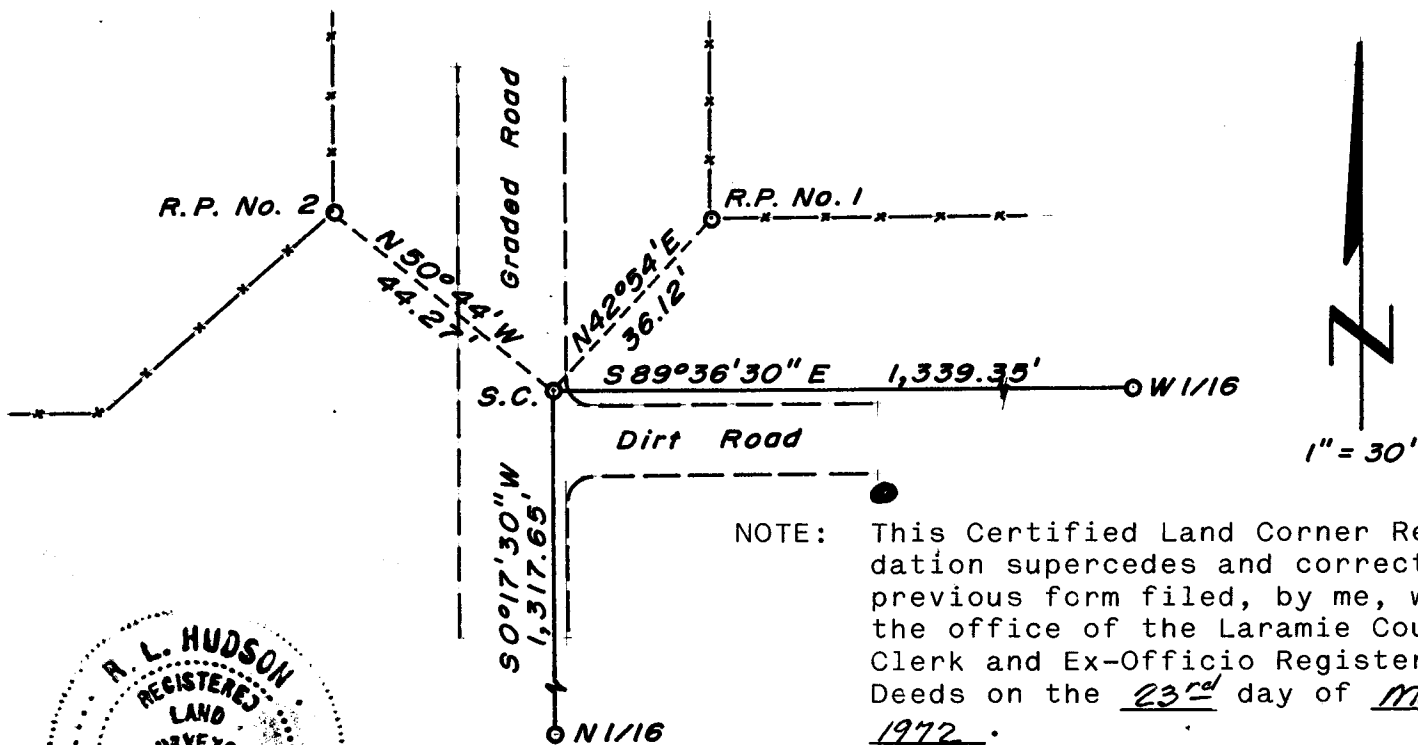
DESCRIPTION OF CORNER EVIDENCE FOUND, AND ORIGINAL RECORD (if known)

LOCATION No corner monument found, corner position determined from ties shown in County Surveyor's Field Book No. 52 at page 89.
 S.10 S.11
 S.15 S.14 G.L.O. record - "Set Granite Boulder, 18 x 8 x 8 for Cor. to 10 11 14 & 15".
 T.14N., R.65W.
 6th P.M.

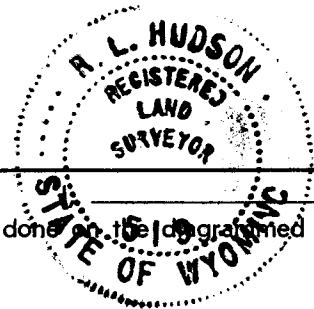
DESCRIPTION OF MONUMENT AND ACCESSORIES ESTABLISHED TO PERPETUATE THE ORIGINAL LOCATION OF THIS CORNER:

At the corner: Corner falls in graded road, no monument set.
 Accessories: R.P. No. 1; A 5/8" dia. x 24" long rebar with aluminum cap bears N 42° 54' E, 36.12 feet distant.
 R.P. No. 2; A 5/8" dia. x 24" long rebar with aluminum cap bears N 50° 44' W, 44.27 feet distant.

SKETCH, WITH COURSE AND DISTANCE TO ADJACENT CORNER IF DETERMINED IN THIS SURVEY.
 (May Sketch or Paste Reproduction on Reverse Side.)



NOTE: This Certified Land Corner Recordation supercedes and corrects a previous form filed, by me, with the office of the Laramie County Clerk and Ex-Officio Register of Deeds on the 23rd day of May, 1972.



R. L. Hudson certify that I have carefully performed ~~or reviewed~~ the work done on the designated corner as reported on this recordation form and approve the same.

R. L. Hudson Wyoming L.S. No. 519
 Signature of Surveyor Registration No.

STATE OF WYOMING,
 Office of Clerk and Recorder,
 County of Laramie

516411

This "corner record" was filed for record on the 9 day of February, 1977, was noted on the cross-index plat and is assigned page No. _____, in book No. _____.

Janet E. W. Hitchcock
 County Official

Cross Index No. _____	T. _____	R. _____	Mer. _____
<u>J-17</u>	T. _____	R. _____	Mer. _____
	T. <u>14</u>	R. <u>65</u>	Mer. _____
	T. _____	R. _____	Mer. _____
	T. _____	R. _____	Mer. _____
	T. _____	R. _____	Mer. _____

J-17 14-65